



# Optimus™ 5100

---

## Quick Start Guide

如要到中国 [www.honeywellaidc.com](http://www.honeywellaidc.com) (简体)。



## ***Out of the Box***

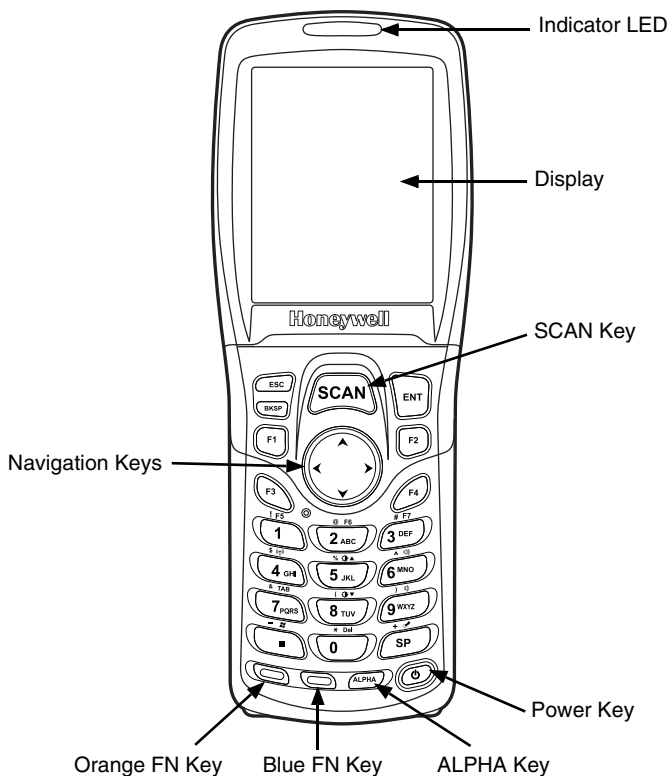
Verify that your carton contains the following items:

- Optimus 5100 mobile terminal
- Main battery pack (3.7V, Li-ion)
- AC power supply
- Lanyard
- Belt Clip
- Quick Start Guide

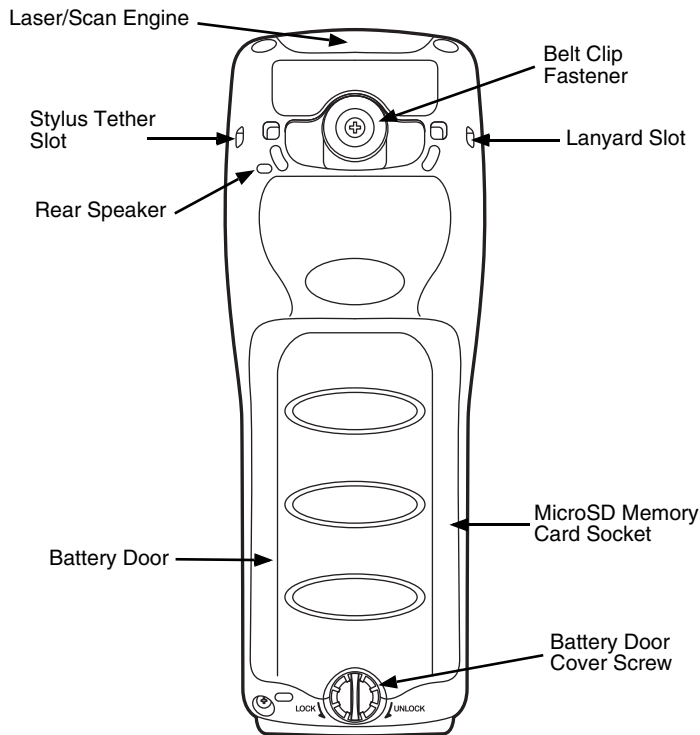
*Note: If you ordered accessories for your terminal, verify that they are also included with the order.*

Be sure to keep the original packaging in case you need to return the Optimus terminal for service.

## Front Panel



## ***Back Panel***



# ***Keyboard***

## ***Alphanumeric Keyboard***



### ***Navigation Keys with Mouse Pointer***

To activate mouse pointer, press the ALPHA key until you see a pointer in the task bar.

To move the pointer, use keys 1, 2, 3, 4, 6, 7, 8, 9. To select press the 5 key.

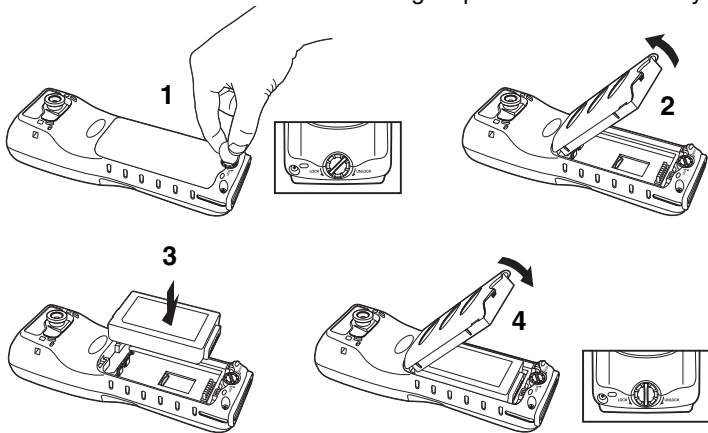
To deactivate mouse pointer, press the ALPHA key.

## Installing the Battery Pack



*Ensure all components are dry prior to mating terminals/batteries with peripheral devices. Mating wet components may cause damage not covered by the warranty.*

The Optimus 5100 is shipped with the battery packaged separately from the terminal. Perform the following steps to install the battery.



*Note: Install the battery door before powering the terminal.*

Connect the terminal to one of the Optimus 5100 charging peripherals to charge the battery pack.



*We recommend use of Honeywell Li-Ion battery packs. Use of any non-Honeywell battery may result in damage not covered by the warranty.*

## ***Charging the Optimus***

Optimus terminals ship with the main battery and the backup battery significantly discharged of power. Charge the main battery pack with an Optimus charging device for a minimum of 4 hours before initial use.

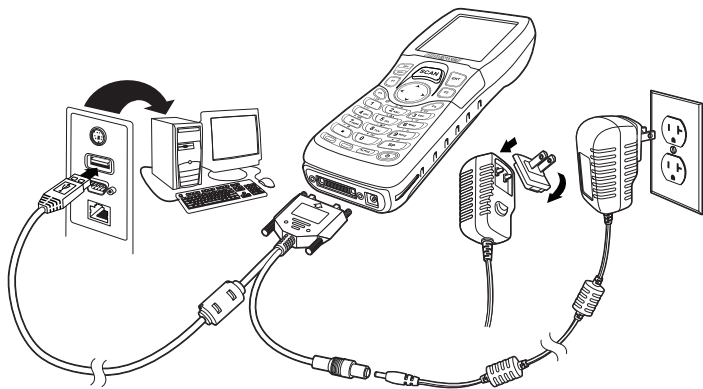
If you remove the battery or it is completely discharged, a fully charged backup battery will provide approximately 0.5 hours of work in suspend mode, during which you can change or charge the main battery pack.

If the backup battery discharges completely, some data will be lost.

### ***Optimus 5100 LED Indicators***

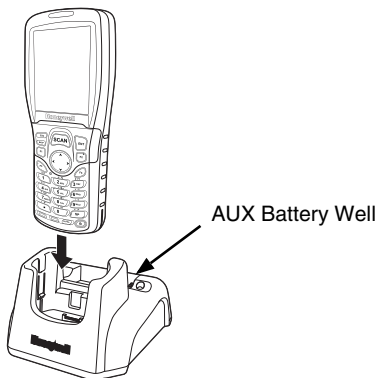
Green	Full or fully charged
Red	Charging

## ***Charging/Communication Cable***

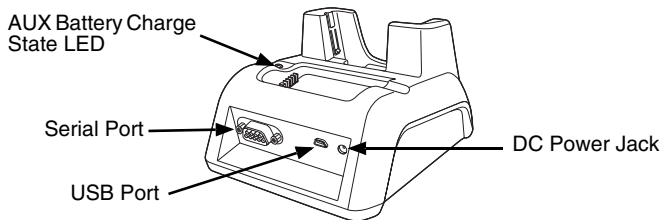




## ***HomeBase***



## ***HomeBase Back Panel***



## ***HomeBase Battery Well LED Indicators***

Green	Full (completed charge)
Red	Fast charge
Orange	Pre-charge (low battery status)
Orange - Blinking	Battery cannot be charged
Off	No battery, fault or over temperature

## ***Suspending/Resuming Terminal***

To put the device into Suspend mode when the terminal is powered on:

1. Press and release the **Power** button.
2. To resume from the Suspend mode, press and release the **Power** button.

## ***Restarting the Device***

In case of a system failure, press the reset button. The Optimus 5100 will restart once the reset button is released.

## ActiveSync Communication

To synchronize data (e.g., e-mail, contacts, and calendar) between the terminal and the host workstation (PC):

1. ActiveSync® (version 4.5 or higher) or Windows® Mobile Device Center (WDMC) must be installed on your PC. You can download the most current version of ActiveSync or WDMC from the [Microsoft Web site](http://go.microsoft.com/fwlink/?LinkId=147001) (<http://go.microsoft.com/fwlink/?LinkId=147001>).

*Note: Optimus terminals ship with ActiveSync already installed. ActiveSync on your Optimus terminal works with WDMC on PCs running Windows Vista or Windows 7 and with ActiveSync on PCs running Windows XP.*

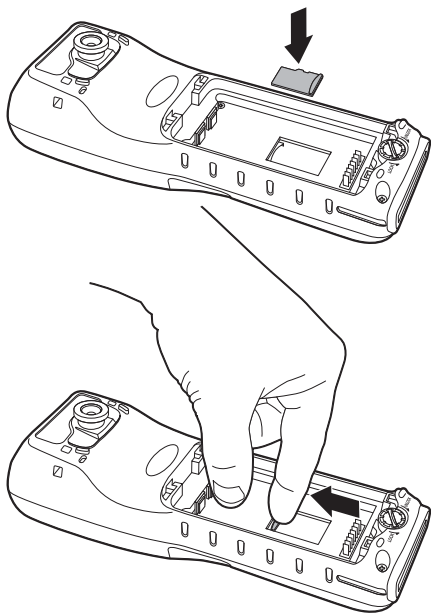
2. The Optimus terminal and PC must be configured for the same communication type.
3. Connect the terminal to the PC (using an Optimus peripheral) to initiate communication. For additional information on ActiveSync or Windows Mobile Device Center visit [www.microsoft.com](http://www.microsoft.com).



*We recommend use of Honeywell peripherals, power cables, and power adapters. Use of any non-Honeywell peripherals, cables, or power adapters may cause damage not covered by the warranty.*

## ***Installing a Memory Card***

1. Power down the terminal.
2. Unlock and remove the battery door.
3. Remove the battery.
4. Slide the MicroSD card in the slot until it clicks.
5. Install the battery.
6. Install and lock the battery door.
7. Power on the terminal.



## ***Using the Scan Engine***

Point the aiming beam at a bar code. The aiming beam must align with the bar code for the best results. Holding the terminal between 4-10 inches (10-25 cm) from a bar code is recommended.

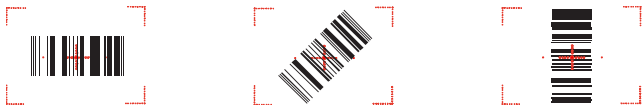
1. Select **Start > Programs > Demos > Scan Demo**.
2. Point the Optimus terminal at the bar code.
3. Project the aiming beam by pressing and holding the SCAN key.
4. Center the aiming beam over the bar code. For optimum performance, avoid reflections by scanning the bar code at a slight angle.
5. When the bar code is successfully decoded the terminal beeps. The bar code information is entered into the application in use.

## ***Aiming Beam***

The aiming beam is narrower when you hold the terminal closer to a bar code and the aiming beam is wider when you hold it farther from the bar code.

The aiming beam must be aimed closer to symbologies that have smaller bars or elements (mil size). The aiming beam must be aimed farther from symbologies that have larger bars or elements (mil size).

### ***5300SR Red High-Vis Aiming Pattern***



### ***4813 Red Aiming Beam***



## ***Technical Assistance***

Contact information for technical support, product service, and repair can be found at [www.honeywellaidc.com](http://www.honeywellaidc.com).

## ***User Documentation***

For localized versions of this document, and to download the User's Guide, go to [www.honeywellaidc.com](http://www.honeywellaidc.com).

## ***Patents***

For patent information, please refer to [www.honeywellaidc.com/patents](http://www.honeywellaidc.com/patents).

## ***Limited Warranty***

Refer to [www.honeywellaidc.com/warranty\\_information](http://www.honeywellaidc.com/warranty_information) for your product's warranty information.

## ***Disclaimer***

Honeywell International Inc. ("HII") reserves the right to make changes in specifications and other information contained in this document without prior notice, and the reader should in all cases consult HII to determine whether any such changes have been made. The information in this publication does not represent a commitment on the part of HII.

HII shall not be liable for technical or editorial errors or omissions contained herein; nor for incidental or consequential damages resulting from the furnishing, performance, or use of this material.

This document contains proprietary information that is protected by copyright. All rights are reserved. No part of this document may be photocopied, reproduced, or translated into another language without the prior written consent of HII.

© 2011 Honeywell International Inc. All rights reserved.

Web Address: [www.honeywellaidc.com](http://www.honeywellaidc.com)

